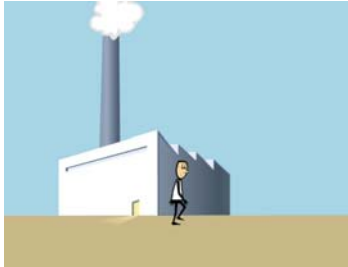
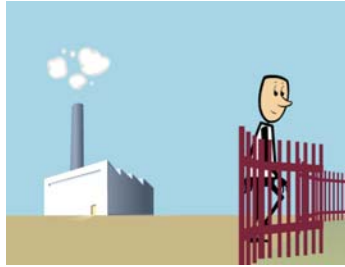


# EnviroPro UK Biodiversity Damage



The Environmental Liability Directive was transposed in England in March 2009. Businesses now face new Environmental exposures



The new regulations introduce new concepts for severe environmental damage to protected species and their natural habitats, to streams, rivers and to thousands of designated natural areas.



Businesses will be responsible for the full consequences of damaging this biodiversity.



The environmental authorities can demand action. (In an emergency they can even do emergency work themselves and recover the costs from the business later.)



The authorities can force Primary remediation, making the company clean up the pollution and restore the environment to its original condition.



If it is not possible to complete the primary remediation, the company could be forced to make 'complementary' remediation by providing a similar level of natural resources at an alternative site.



And the company can even be forced to make compensatory remediation improvements at the original or alternative site for the interim losses the environment has suffered.



AIG EnviroPro covers your company for the costs of these, plus defence, assessment and loss mitigation costs.

So your company and the environment can rest easy.