

NEW PRIVATEEDGE



BREADTH AND FLEXIBILITY



MORE FLEXIBLE

We've made PrivateEdge more flexible with core D&O cover and Employment Practice, Pension Trustee Liability and Crime modules...



ADJUSTABLE LIMITS

...all with adjustable limits so you can customise the cover to suit your clients.



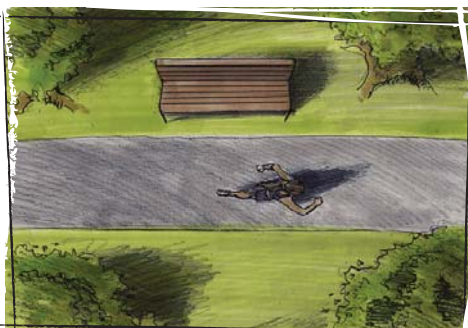
HIGHER LIMITS

For instance some long-standing companies might prefer higher limits for their Pension Trustee Liability cover.



CRIME COVER

Or businesses with high stock turnover might need more crime cover.



COMPLETELY SEPARATE

And while we're talking about limits, PrivateEdge keeps the cover for employment actions completely separate from other corporate liabilities...



...so a large employment practice claim can't eat up any of the cover for a corporate manslaughter action for example. Which means even more reassurance for your clients.

THIS INFORMATION IS INTENDED FOR INSURANCE BROKERS AND OTHER INSURANCE PROFESSIONALS

This information is a brief product description only. Any scenarios should not be relied on to justify coverage in any situation.

Please refer to the policy wording for full terms and conditions

This insurance is underwritten by AIG UK Limited which is authorised and regulated by the Financial Services Authority (FSA number 202628).

This information can be checked by visiting the FSA website (www.fsa.gov.uk/register). Registered in England: company number 1486260.

Registered address: The AIG Building, 58 Fenchurch Street, London, EC3M 4AB. A member company of American International Group, Inc.