



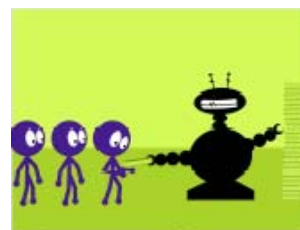
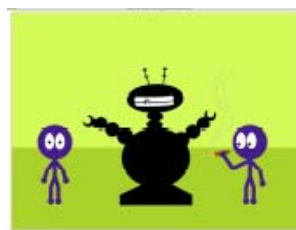
## Script: Far Sighted Client - Training



Designed to develop and strengthen the health and safety element of any organisation, Accel Elite comes with web-based compliance manager modules that provide state-of-the-art online training for staff at all levels. The highly extensive library of modules covers a wide range of topics such as stress, ergonomics, noise and machinery – some even being industry specific.



The training modules work on two levels: first by equipping front-line staff with the essential health and safety training for their jobs, and second, by developing the skills of managers and supervisors in running risk assessments and implementing risk improvements. In addition, the interactive trainee testing sessions allow results to be stored in a supporting database, providing a full audit trail of training records.



The system is invaluable in identifying employees that need extra training, through the provision of pass and fail reports, so demonstrating a high standard of compliance to customers, contractors or regulators. Accel Elite provides full access to the entire training library. Accel Elite can also help businesses that want to increase the professional skills and qualifications of their people. Our preferred training partners deliver nationally accredited training programmes at specially discounted rates for Accel Elite policyholders.

### AIG UK Limited

The AIG Building  
58 Fenchurch Street London EC3M 4AB.  
Tel: +44 (0) 20 7954 7000  
Fax: +44 (0) 20 7954 7001

Insurance is underwritten by AIG UK Limited which is authorised and regulated by the Financial Services Authority (FSA number 202628). This information can be checked by visiting the FSA website (<http://www.fsa.gov.uk/register>). AIG UK Limited is a member of the Association of British Insurers and a member company of American International Group, Inc. Registered in England : company number 1486260. Registered address: The AIG Building, 58 Fenchurch Street , London , EC3M 4AB .

