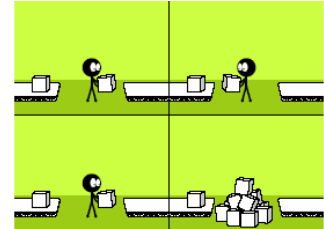
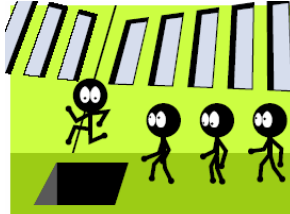
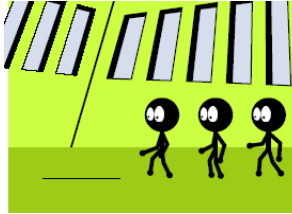
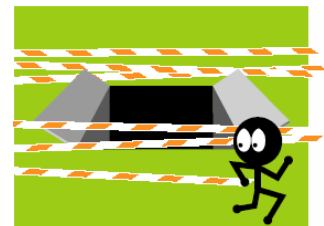
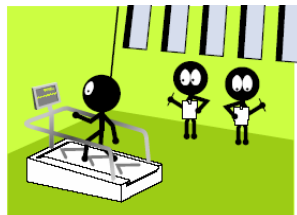
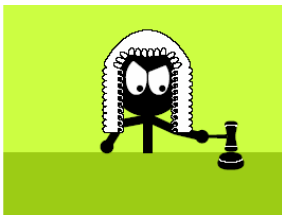


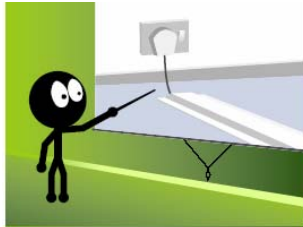
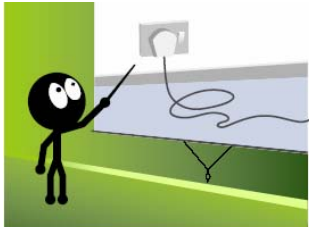
Script: Near Sighted Client – Loss Control



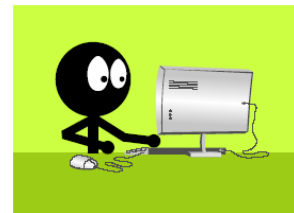
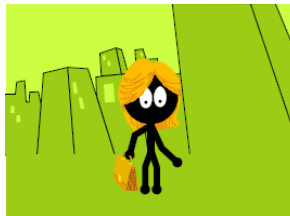
In the UK, over 160,000 employees suffered a fatal or significant work related injury in 2005/06.



And not only will they suffer, so will their employers: in lost production and possible fines. Not only do we help employees after an injury at work - we can help the employers prevent the accidents in the first place.



Depending on the risk, our loss control service can include a free in-depth site visit to identify potential danger points and suggest ways to minimise the risks.



We've had years of experience in helping businesses improve their Health & Safety performance and reduce their accident rates - saving them money in the process. In fact over a 2 year period, our Loss Control reduced accident rates by an average of 9.5% in the retail sector, 12% in the manufacturing sector and nearly 17% for white collar risks.